
Great Western Railway

GWR Business Update for Exerail July 2016

Lewis Ward
Regional Development
Planning & Programme Manager

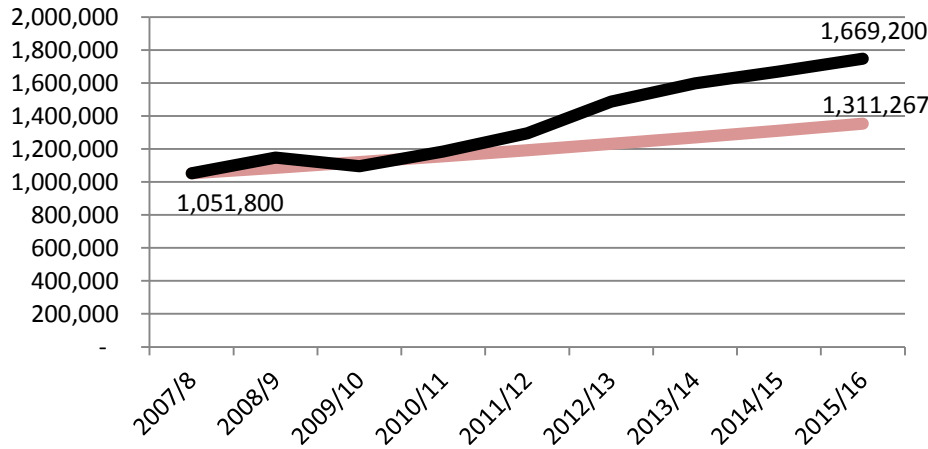


Presentation contents

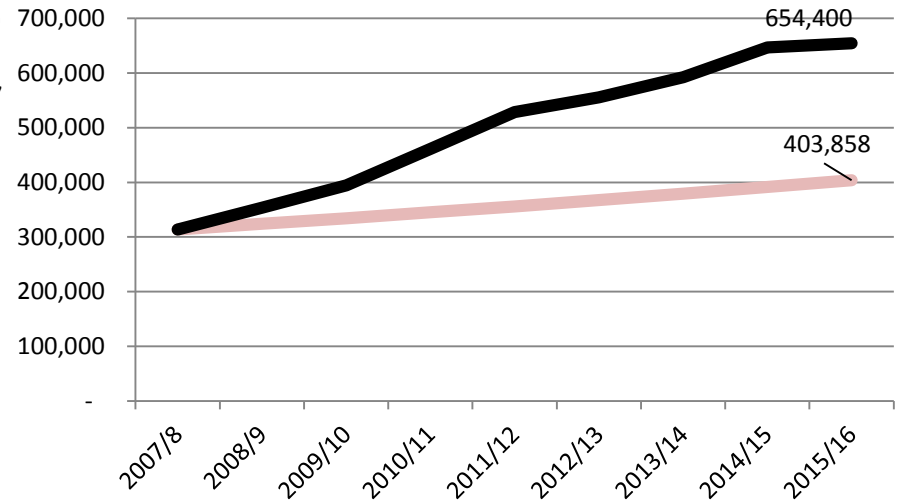
- **Passenger growth**
- **Performance**
- **Fleet update**
- **Speed to the West**
- **Stations Investment**
- **Depot Investment**
- **Community Rail**

Growth in Rail Travel across Devon

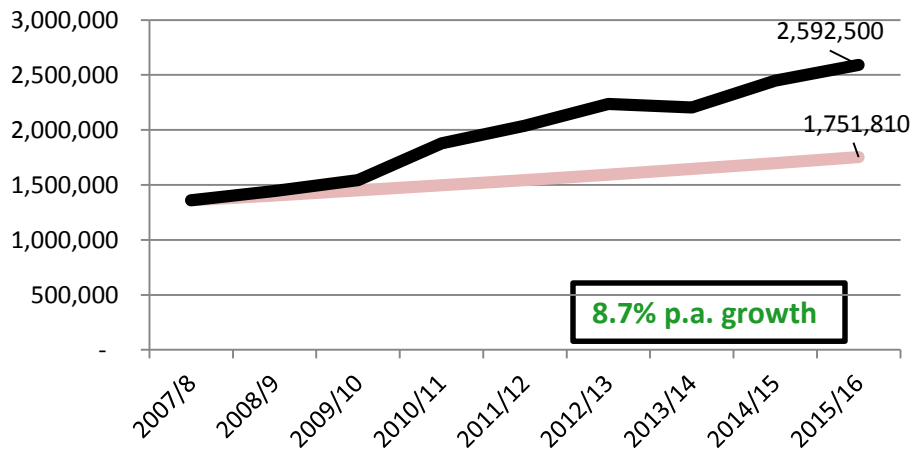
Exeter – Exmouth



Exeter – Barnstaple



Exeter – Paignton / Plymouth



The darker line shows actual growth
Which is consistently above the lighter line
which shows the Great Western RUS, 2010
assumption of 3.2% growth PA

DfT research shows growth on Community
Rail Lines averages 2.8% per annum above
regional average

Newcourt 'Top 10'

Destination	%
Exeter Central	49
Exmouth	10
Exeter St Davids	3
Topsham	2
St James' Park	2
Digby & Sowton	2
Teignmouth	2
Exeter St Thomas	1
Polsloe Bridge	1
Lympstone Village	1

73,832 journeys in the first year (June 2015 – June 2016)

64% of journeys are wholly within the Avocet Line

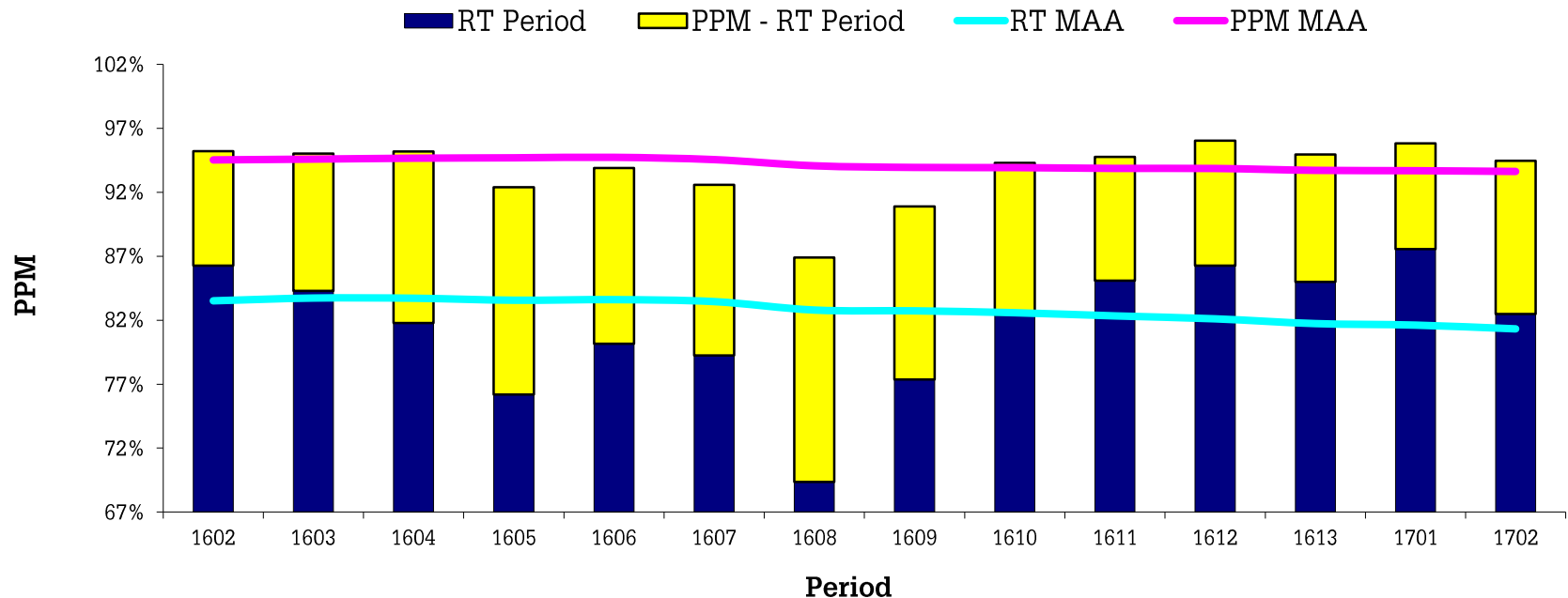
London ranks at number 22 in the list

Many destinations, far and wide, make up the balance

Performance

Devon Metro Services

All Day PPM: Period v MAA



Public Performance Measure (PPM) of 93.6% achieved over the last year

The local Devon target is 92%

GWR fleet update



- The new Intercity Express Train carries first passengers
- Refurbished Class 150/2 trains being rolled out in the West
- Exeter depot expansion plans progressing

Intercity Express Trains being built in the UK at Newton Aycliffe



And being tested on our network...



Journey Time Study

- **‘Speed to the West’** Study into journey time improvements between London and the South West peninsula nearing completion
- Will inform Peninsula Rail Task Force (PRTF) report to DfT on 20 year strategy
- PRTF strategy also looking at long term resilience for the line
- Report expected after the summer



Study funded by GWR to look at maximising the benefits of the AT300 trains introduction



Stations investment

£50m of Franchise investment in addition to investment from local authorities:

- Tiverton Parkway car park extension under construction
- Planning for Newton Abbot gateline underway
- Funding secured for gateline & concourse improvement at Exeter St Davids
- Ready to go at Exmouth!
- Torbay Council investment in mobile ticketing on Devon Metro (Autumn)
- Discussing platform extensions with DCC and LEP to support Devon Metro

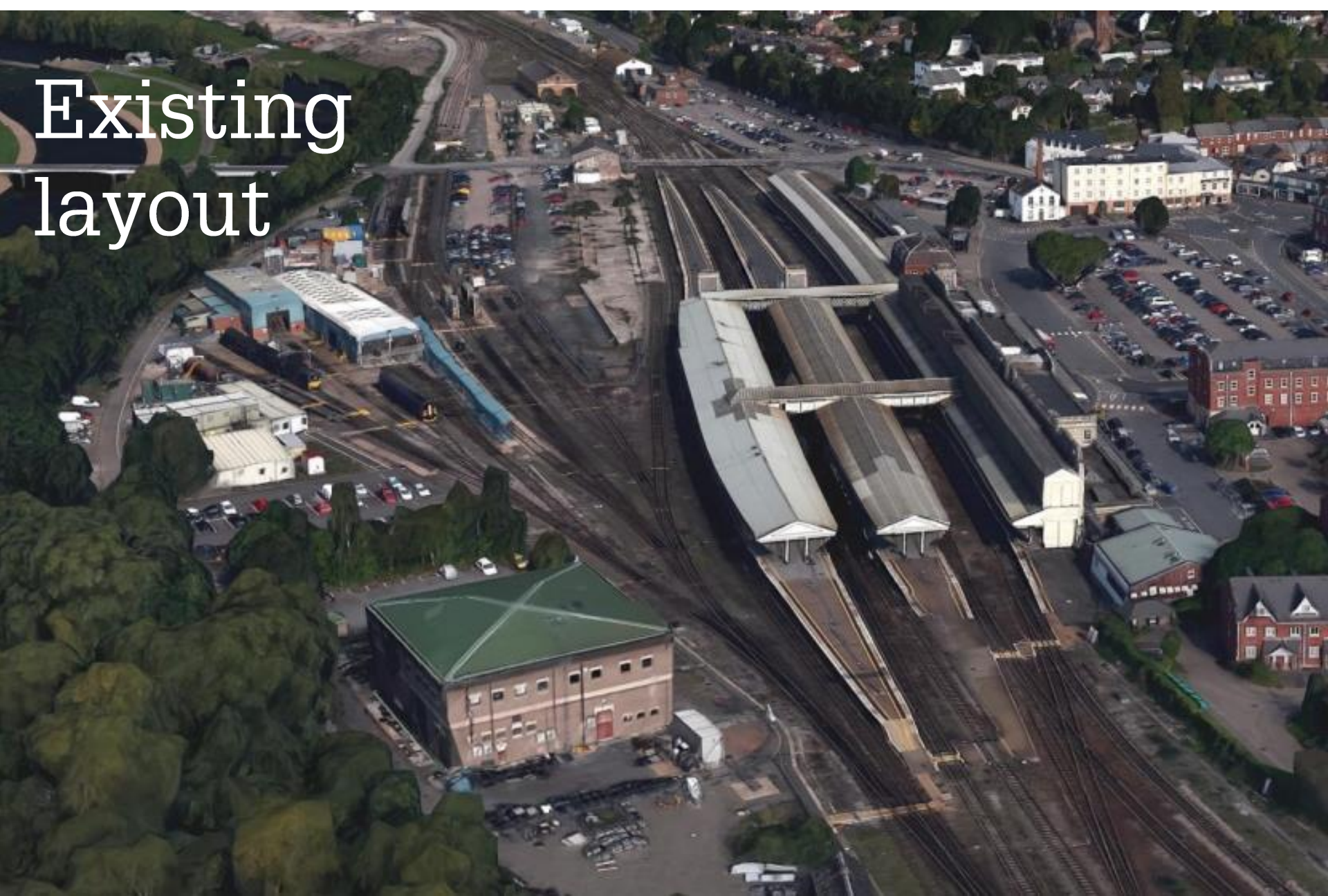


NSIP improvements at Exmouth Station to match DCC investment in frontage

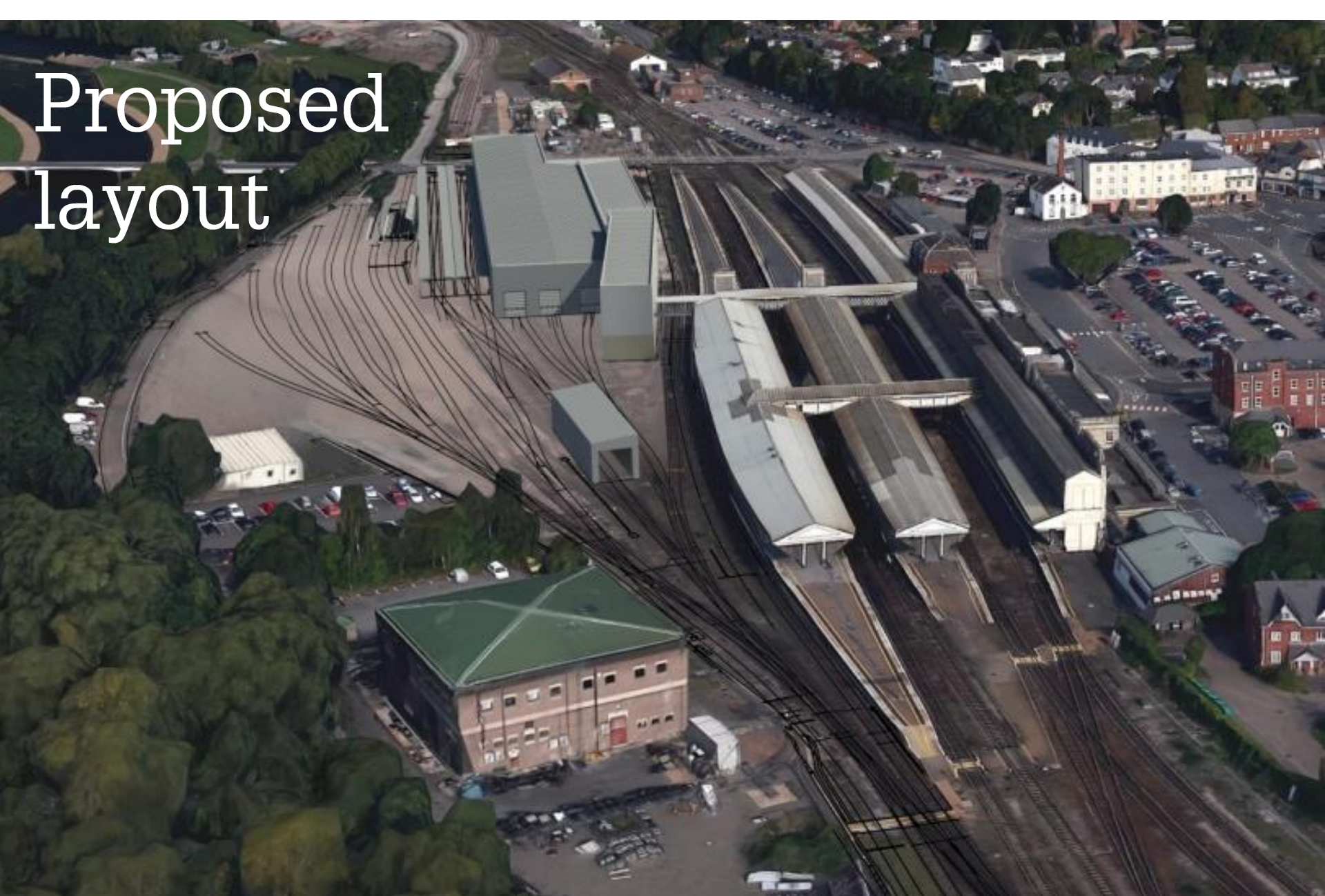
Exeter Depot Improvements

- GRIP 3 feasibility design complete by September 2016
- Commencement of works on-site early Q2 2017
- New depot ready by March 2018
- Supporting enhanced Devon Metro services from December 2018
- Enables comprehensive improvement of forecourt area

Existing layout



Proposed layout



Proposed
layout



More highly skilled jobs
based here
in Devon



GWR

Community Rail

Investment in Community Rail Partnerships

- Customer & Communities Fund projects for Polsloe Bridge (access improvements) and St James' Park (shelter improvements) in design
- Customer & Communities Fund Round 2 bids received, includes 7 projects in Devon and 3 in Torbay
- North Devon Line Promotion Group first meetings held and work programme started
- Further Avocet Line marketing (led by Devon & Cornwall Rail Partnership)



New to using the line?	Regular passenger?	Did you know:
		<ul style="list-style-type: none"><input checked="" type="checkbox"/> Under 5s go free<input checked="" type="checkbox"/> 5-15yr olds half price<input checked="" type="checkbox"/> Dogs allowed<input checked="" type="checkbox"/> Bikes permitted

Community Rail



Year round extra Sunday trains, championed by the Avocet Line Rail User Group and supported by Devon County Council

Community Rail



**Okehampton Summer Sunday Services,
funded by Devon County Council**



Summary

- New Intercity Express Trains being tested
- Investing in high speed services (speed to the West)
- Investment for new car parks, gatelines, smart ticketing
- Depot improvement plans progressing
- Investing in communities (CCIF Round 2)
- Enhanced services running (Exmouth & Okehampton)



Thank you

GWR